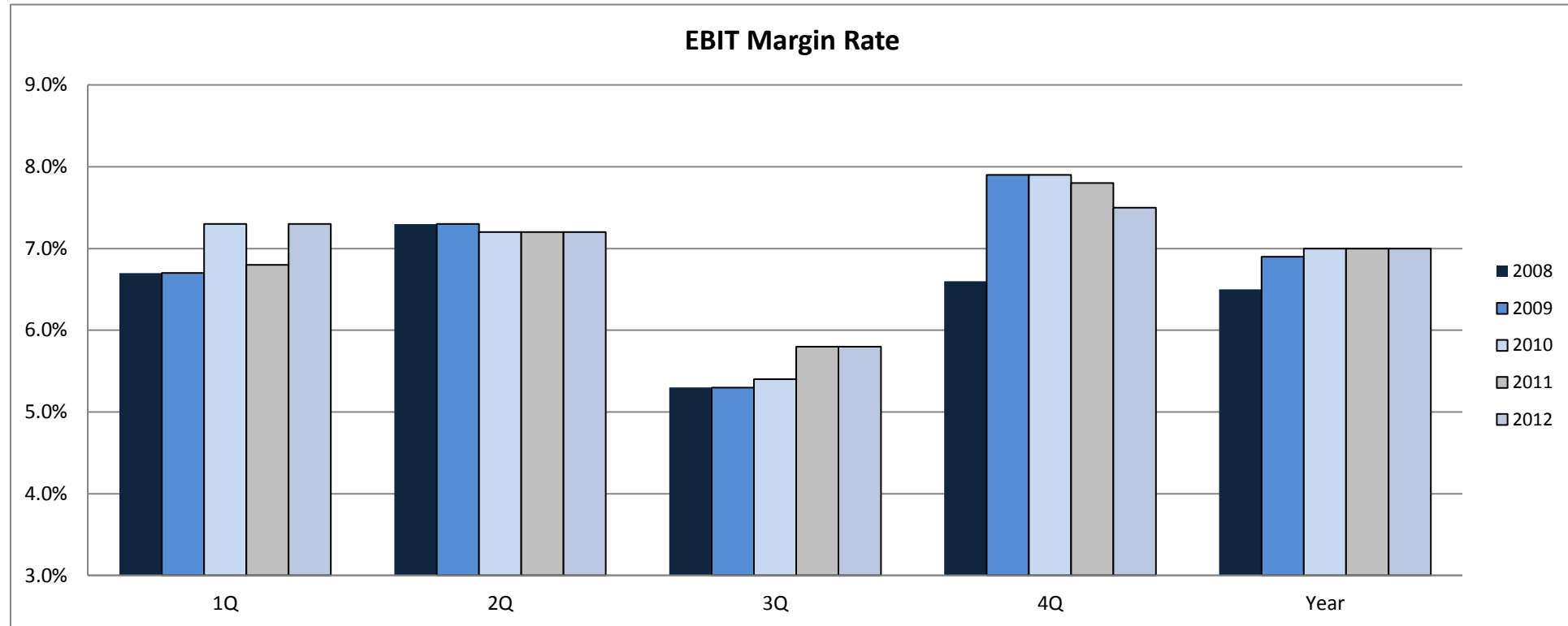


TARGET CORPORATION

Historical U.S. Retail Segment

EBIT Margin Rate ^{(a)(b)}

Quarterly, Fiscal 2008 to Present



Fiscal Year	1Q	2Q	3Q	4Q	Year
2012	7.3%	7.2%	5.8%	7.5%	7.0%
2011	6.8%	7.2%	5.8%	7.8%	7.0%
2010	7.3%	7.2%	5.4%	7.9%	7.0%
2009	6.7%	7.3%	5.3%	7.9%	6.9%
2008	6.7%	7.3%	5.3%	6.6%	6.5%

(a) EBIT is earnings before interest expense and income taxes.

(b) EBIT margin rate is computed by dividing EBIT dollars by sales.

Source: Target's Consolidated Financial Statements as filed with the U.S. Securities and Exchange Commission.

Last Updated: 2/27/2013